



Bellows Injection Pump

*The most important product ever to be designed
specifically for chemical/odorant pumps!
(Metering or injection types)*



- ◆ Typical repairs can be completed without exposing the product to atmosphere.
- ◆ Stainless Steel/Kalrez Check Valves.
- ◆ Environmental Protection from unwanted spills and leaks.
- ◆ Simplified Design keeps replacement parts to a minimum.
- ◆ Easy and Quick repairs.

The BIP Series of Injection Pumps are displacement pumps used to inject a liquid chemical into a pressurized pipeline. Odorant, acid, methanol and inhibitor chemicals are just a few of the products that can be injected with the BIP Series of pumps.

The BIP incorporates a Teflon[®] bellows that separates the chemical being injected from the working side of the pump, as well as from the outside environment. Thus, the hydraulic piston and seals are not subjected to the harsh environments of the chemicals which will in-turn prolong seal life and minimize the downtime needed for repairs. Unwanted leaks, odors and spills are maintained within the bellows, maximizing environmental protection.

Applications

- Acid Injection
- Corrosion Inhibitor Injection
- Methanol Injection
- Odorant Systems; Mercaptan, Sulfide and Thiophene Injection

Pump Specifications

Actuator

Operating Pressure:

BIP-1, BIP-2 & BIP-4
100 psi Maximum Supply Pressure

BIP-3
150 psi Maximum Supply Pressure

Material: Anodized Aluminum

Supply Connection:

BIP-1 & BIP-3: Female, 1/4" NPT
BIP-2: Female, 1/8" NPT

Wetted Parts

Injection Body: 316 S.S.

Check Valve Body: 316 S.S.

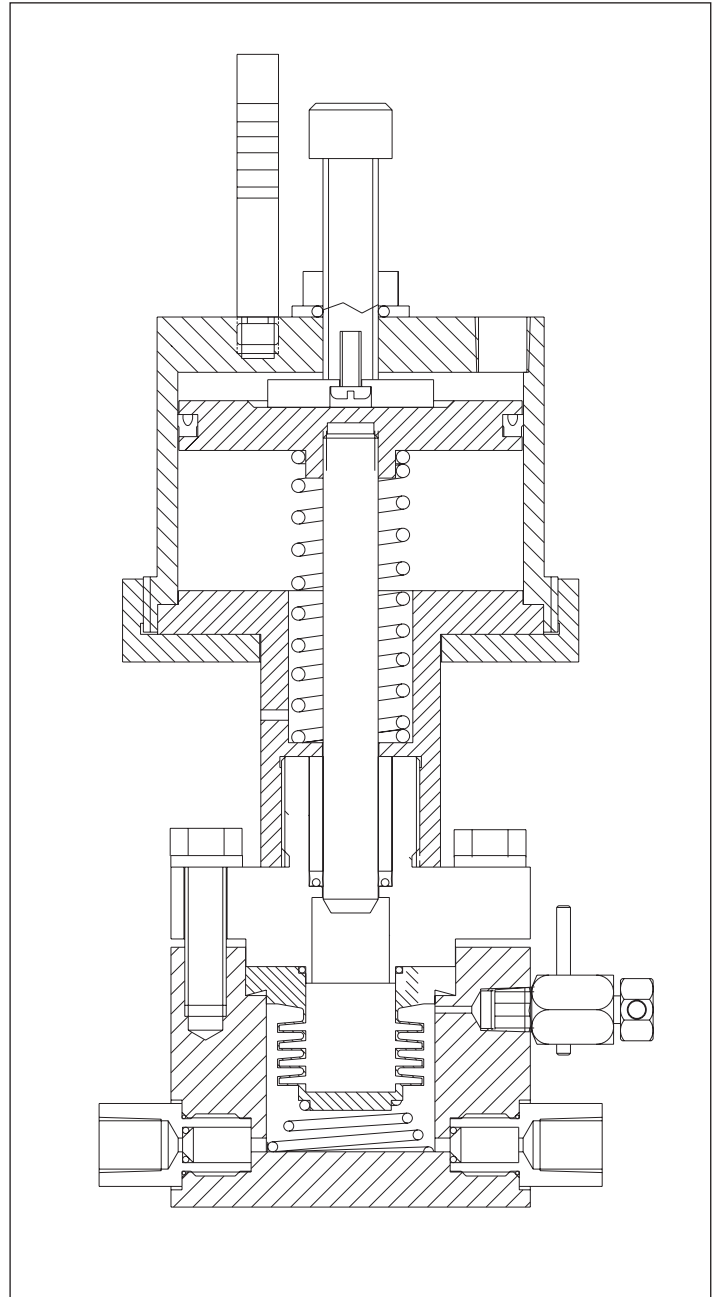
Check Valve Cartridges: 303 S.S.(Kalrez® Seals)

Check Valve Connections: Female, 1/4" NPT

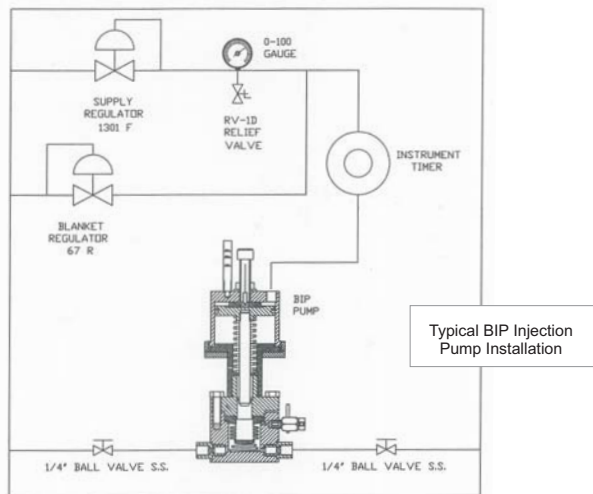
Bellows: Teflon®

Hydraulic Seal: Polyurethane

Hydraulic Piston: 316 S.S. / Nickel Plated



*Specifications subject to change without notice.
Drawings/Photos may be shown with optional equipment.



13839 West Bellfort
Sugar Land, Texas 77478
Phone: 1-877-ODORIZE
Phone: 281-491-3409 Fax: 281-491-8344
www.odoreyes.com

BIP 8/06/2008